

48/18
DRAWING NUMBER

BOCA WOODS COUNTRY CLUB PLAT 4

A PART OF BOCA WOODS COUNTRY CLUB, A P.U.D.
SITUATE IN SECTIONS 23 AND 24, TOWNSHIP 47 SOUTH, RANGE 41 EAST,
PALM BEACH COUNTY, FLORIDA, BEING A REPLAT OF A PORTION OF
FLORIDA FRUIT LANDS COMPANY'S SUBDIVISION NO. 2,
AS RECORDED IN PLAT BOOK 1, PAGE 102.

18

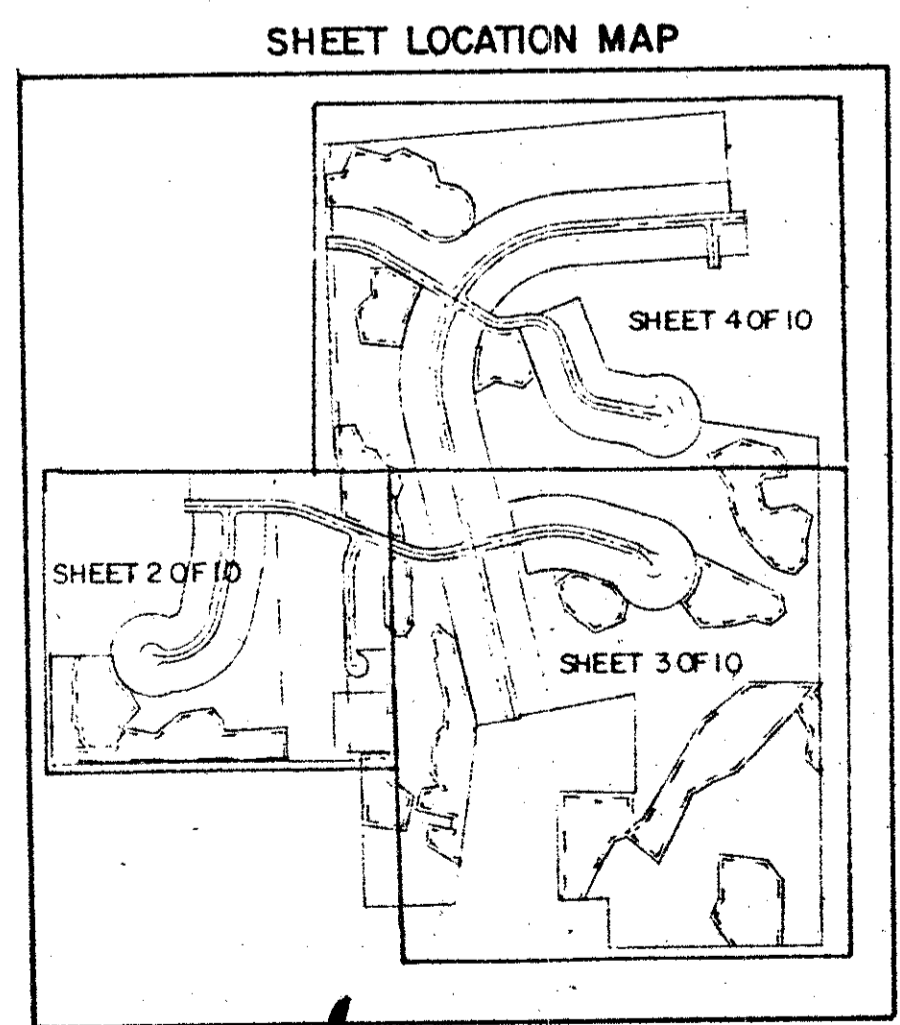
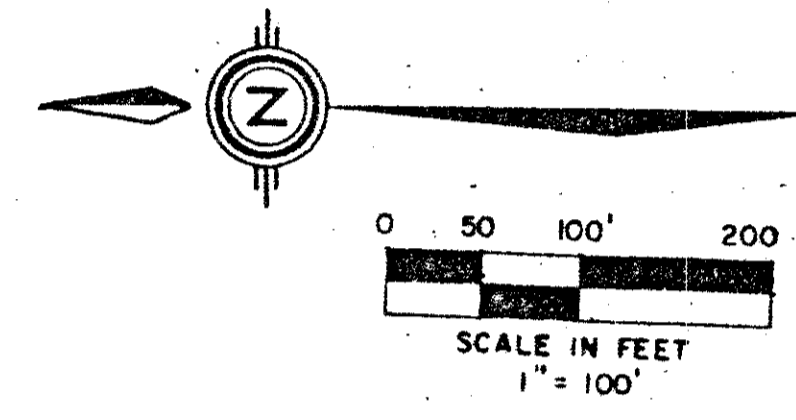
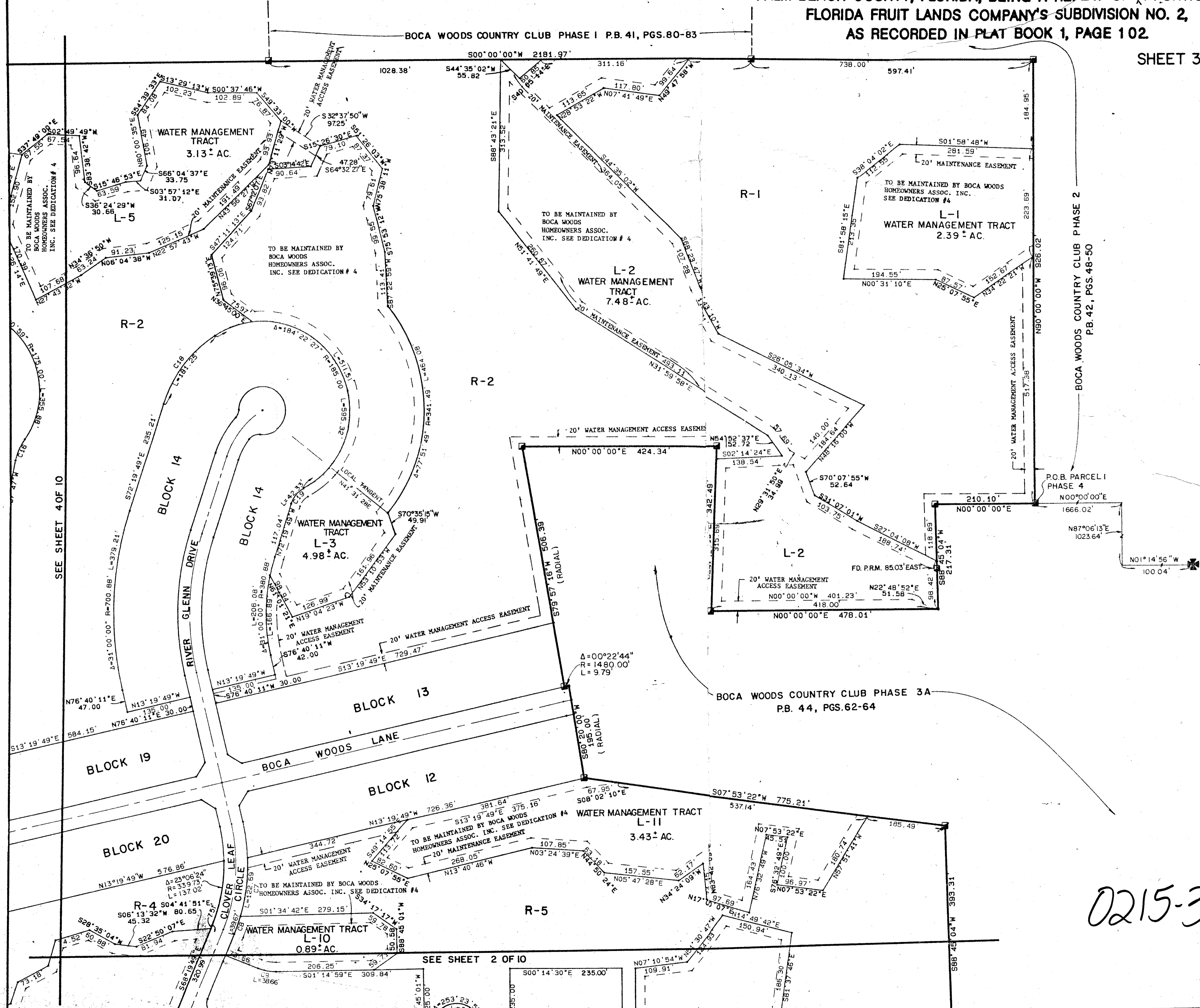
SHEET 3 OF 10

STATE OF FLORIDA
COUNTY OF PALM BEACH
THIS PLAT WAS FILED FOR
RECORD AT _____ DAY OF _____
AD, 1984 AND DULY RECORDED
IN PLAT BOOK _____ ON PAGES
_____ AND _____
JOHN B. DUNKLE, CLERK
CIRCUIT COURT
BY: _____, D.C.

DRAWING NUMBER

DRAWING NUMBER

DRAWING NUMBER



0215-307 48/18

Meridian Surveying and Mapping Inc.
WEST PALM BEACH, FLORIDA
DRAWN BY M.E.H. DATE JAN. 1984
CHECKED BY _____ SCALE 1" = 100'
DRAWING NO. 82-P-051
BOCA WOODS COUNTRY CLUB PLAT 4